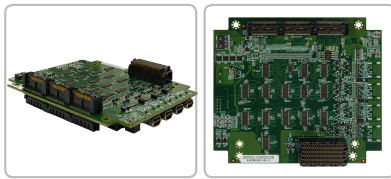
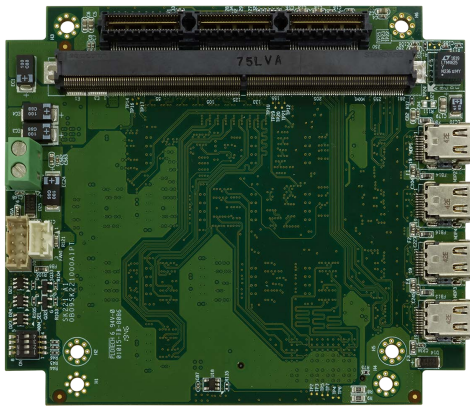


# SK221

PERFECTRON

## PCIe104-FPE MXM Graphic Card Carrier Module



### Main Features

- StackPC and PCIe/104 Compliant
- Utilizes PCIe x16 and x4 Link
- MXM 3.0 and 3.1 Graphic card support Type A and Type B MXM Graphic card support
- up to NVIDIA GeForce GTX1080M
- 12V DC-IN(non-power can support up to 120W)
- Operating Temp. -40~85°C



### Introduction

SK221, a PCIe/104(StackPC) carrier module is designed to offer up to 4 independent displays by MXM interface under extended temperature from -40°C ~ 85°C. SK221 is equipped with 4 x mini DP, 1 x VGA (2 x 5 pin header) which can support GPU up to NVIDIA GeForce GTX1080M. SK221 possess the flexibility of switching the signals between FPE connector (PCIe x16), StackPC (PCIe x1, x4) via dip switch thus is best solution for multi-graphic processors demand applications like mission control room, intelligent information entertainment, 19" rack-mount multi node rugged servers, etc.

NVIDIA® GeForce™ GTX 1080M – (8GB GDDR5, 2560 CUDA Cores, 170W)

NVIDIA® GeForce™ GTX 2060S – (8GB GDDR6, 2176 CUDA Cores, 170W)

NVIDIA® Quadro™ RTX 5000 – (16GB GDDR6, 3072 CUDA Cores, 110W)

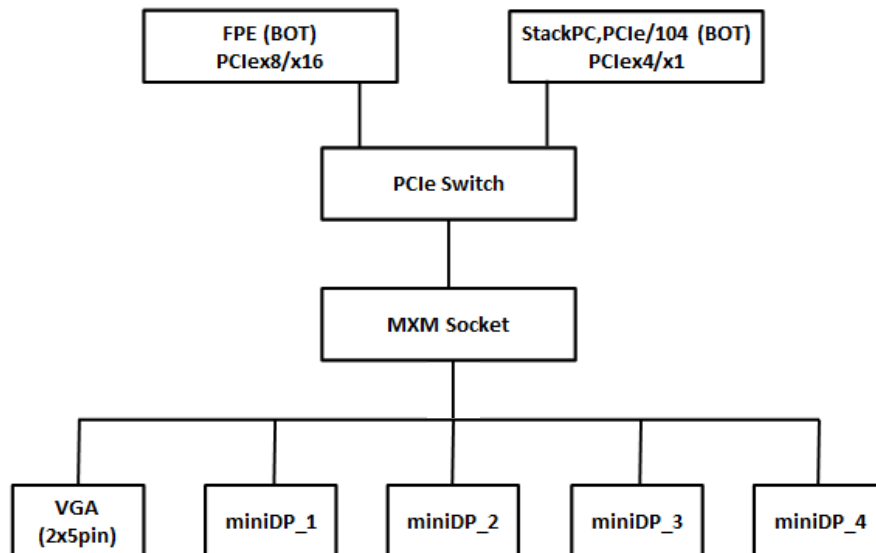
NVIDIA® Quadro™ RTX 3000 – (8GB GDDR6, 1920 CUDA Cores, 80W)

NVIDIA® GeForce™ GTX 1050Ti – (4GB GDDR5, 768 CUDA Cores, 60W)

## ► Specifications

Bus Type	PCI-Express 3.0/2.0
Supported Modules	MXM 3.0 and 3.1 compliant Graphic card
IO	4 x DisplayPort (FOXCONN 3VT11207-N730-7H) 1 x VGA (2x5 pin header) 1 x MXM DC-In (2 pins Terminal Block)
Board Information	Board Dimensions: 95.9 mm x 115.6 mm Stack Direction: UP (One way) Support Form Factor: StackPC and PCIe/104 12V DC-IN(non power can support up to 120W)

## ► Block Diagram



## ► Ordering Information

- **SK221** PCIe104-FPE MXM Graphic Card Carrier Module, Extended temp. -40 to 85°C
- **SK221-P** PCIe104 MXM Graphic Card Carrier Module, Extended temp. -40 to 85°C

► **Schematic Diagram**

