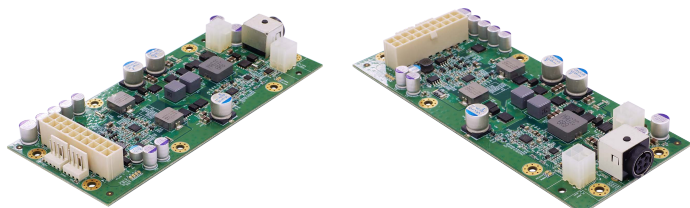
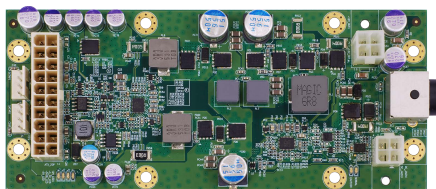
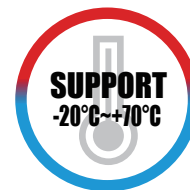


# SK702

PERFECTRON

120W DC/ATX Converter Module with 9V~36V Input ATX Output, Wide Temp. -20 to 70°C (-40 to 85°C optional)



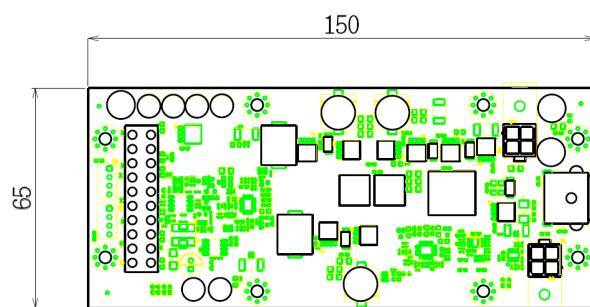
## Main Features

- Wide Input Range: 9V~36V DC
- Over voltage protection
- Over current protection
- Surge protection
- Hot swap/Live insertion
- Compact size
- RoHS complian
- Supports wide operating temp. -20 to 70°C (-40 to 85°C optional)

## ► Specifications

Input Voltage	9V to 36V
Output	120W
Output Voltage/ Current	5VSB @ 1.5A 5V @ 7A 3.3V @ 6A 12V @ 5A -12V @ 0.2A
Performance Characteristic	TBD
Operation Temperature	-20 to 70°C
Dimension	150(W) x 45(L) mm

## ► Dimension



## ► Input/Output Connector

Input connector	1 x 4-pin input 9 to 36V
Output connector	1 x 4-pin output 12V power 1 x 20-pin output ATX power 1 x 4-pin SATA power

## ► Ordering Information

### Modules

Model Number	Description
SK702-ET	120W DC/ATX Converter Module with 9V to 36V input ATX output (-20 to 70°C)
SK702-UT	120W DC/ATX Converter Module with 9V to 36V input ATX output (-40 to 85°C optional)